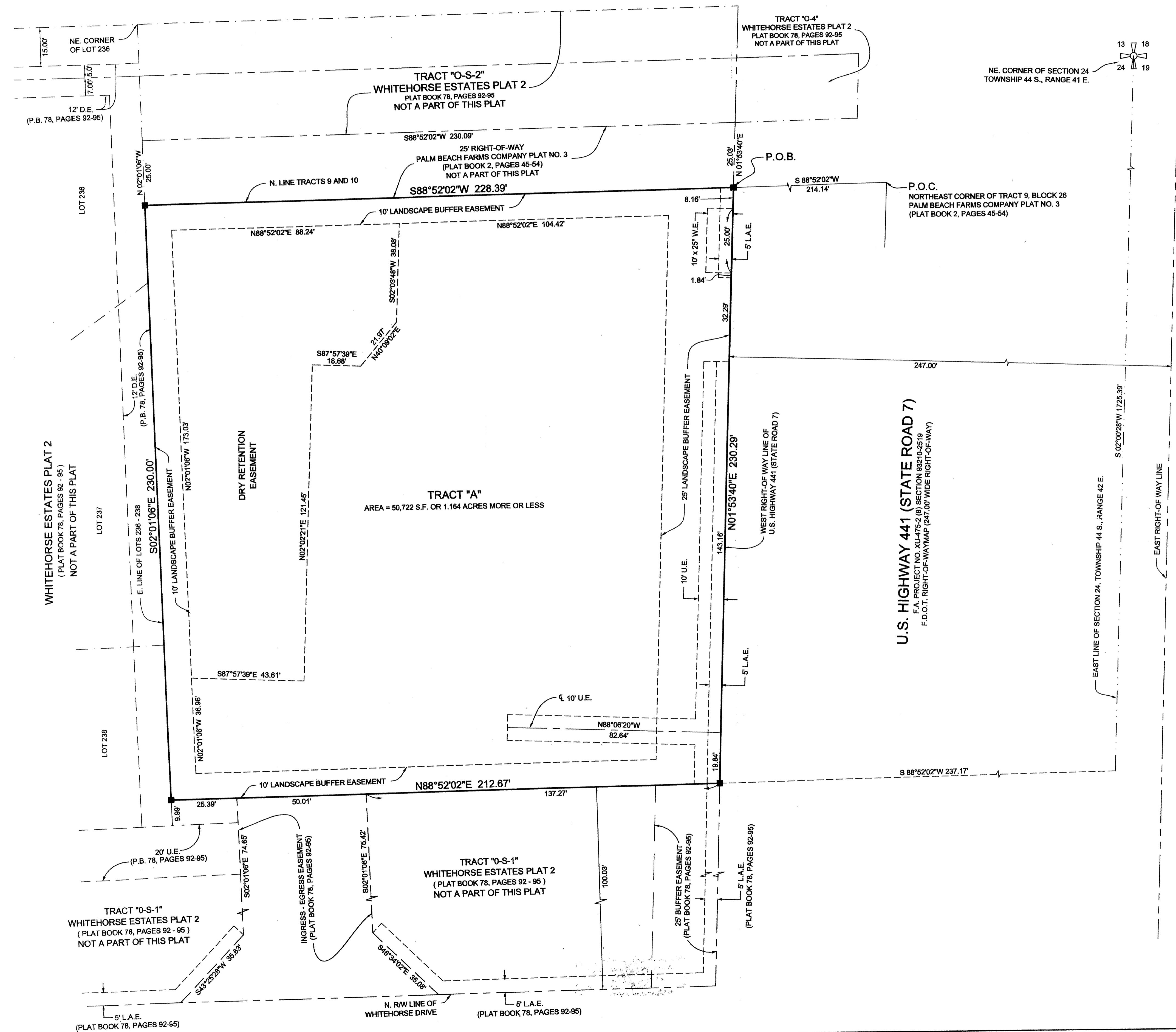


# FAMILY VISION CENTER

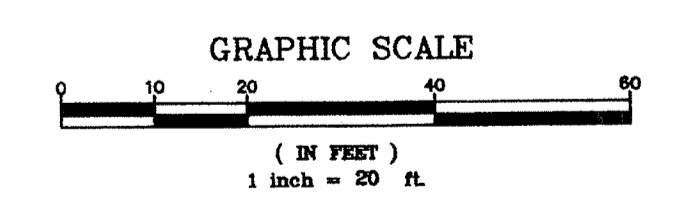
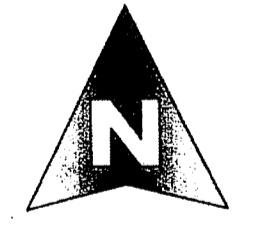
LYING IN SECTION 24, TOWNSHIP 44 SOUTH, RANGE 41 EAST, VILLAGE OF WELLINGTON, PALM BEACH COUNTY, FLORIDA,  
 BEING A REPLAT OF A PORTION OF TRACTS 9 AND 10, BLOCK 26, PALM BEACH FARMS COMPANY PLAT NO. 3,  
 AS RECORDED IN PLAT BOOK 2, PAGES 45 THROUGH 54, PUBLIC RECORDS OF PALM BEACH COUNTY, FLORIDA.  
 NOVEMBER, 2013

COUNTY OF PALM BEACH )  
 STATE OF FLORIDA ) SS  
 THIS PLAT WAS FILED FOR RECORD AT \_\_\_\_\_ M. THIS \_\_\_\_\_ DAY OF \_\_\_\_\_ 2014, AND DULY  
 RECORDED IN PLAT BOOK NO. \_\_\_\_\_ THRU \_\_\_\_\_  
 SHARON R. BOCK,  
 CLERK AND COMPTROLLER  
 BY: \_\_\_\_\_, D.C.



**LEGEND**

P.O.C.	=	POINT OF COMMENCEMENT
P.O.B.	=	POINT OF BEGINNING
P.R.M.	=	PERMANENT REFERENCE MONUMENT
O.R.B.	=	OFFICIAL RECORD BOOK
P.B.	=	PLAT BOOK
D.B.	=	DEED BOOK
P.B.C.	=	PALM BEACH COUNTY
R/W	=	RIGHT OF WAY
CL	=	CENTERLINE
U.E.	=	UTILITY EASEMENT
D.E.	=	DRAINAGE EASEMENT
N	=	NORTHING, WHEN USED WITH COORDINATES
E	=	EASTING, WHEN USED WITH COORDINATES
W.E.	=	WATER EASEMENT
L.A.E.	=	LIMITED ACCESS EASEMENT
FD.	=	FOUND
C.M.	=	CONCRETE MONUMENT
■	=	DENOTES SET P.R.M. L.B. 2438
□	=	DENOTES FOUND P.R.M. AS SHOWN



**MICHAEL B. SCHORAH & ASSOCIATES, INC.**  
 1850 FOREST HILL BLVD., SUITE 208  
 WEST PALM BEACH, FLORIDA 33406  
 TEL. (561) 968-0080 FAX. (561) 642-9726 LB# 2438